



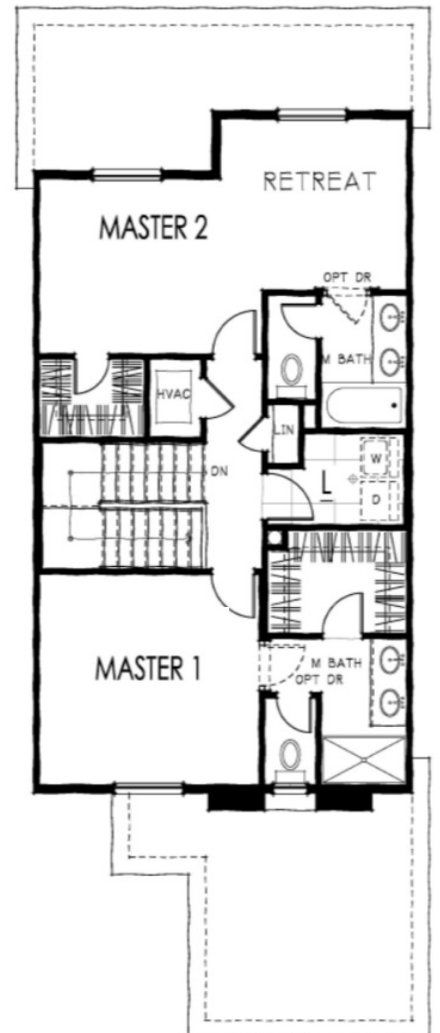
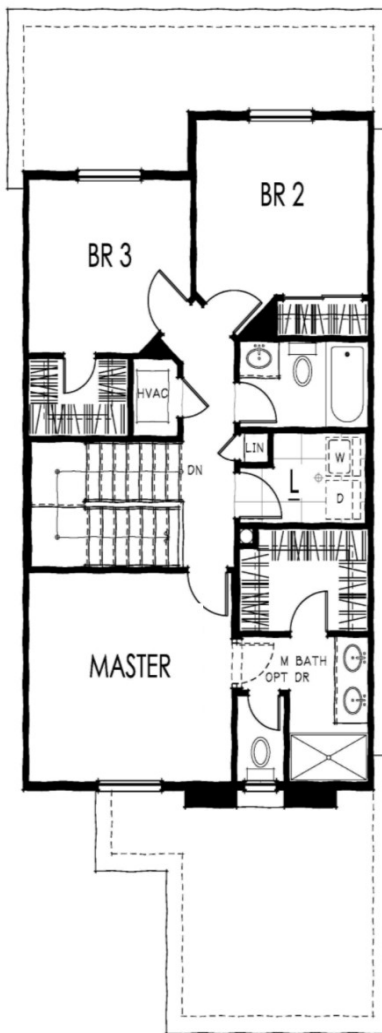
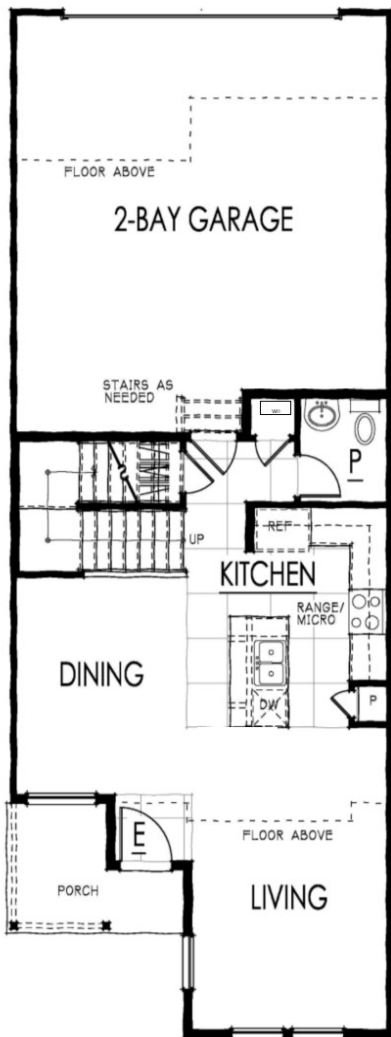
# The Metropolitan



\*This is an artist rendering and color/elevation may change per building. See Sales Associate for more information.

## Features

- 1,404 square feet
- 3 bedrooms
- Optional dual master
- 2.5 bath
- 2 car attached garage



Not all plans are available on all lots. Builder reserves the right to make changes to plans and specifications without prior notice. See a sales associate for more information.



JM Weston Homes

257 Ironclad Lane Colorado Springs, CO 80905

719-571-9737 | info@jmwestonhomes.com